

Anti-Cdc37 Antibody
Catalog # ABO11449**Specification**

Anti-Cdc37 Antibody - Product Information

Application	WB
Primary Accession	Q16543
Host	Rabbit
Reactivity	Human
Clonality	Polyclonal
Format	Lyophilized

Description

Rabbit IgG polyclonal antibody for Hsp90 co-chaperone Cdc37(CDC37) detection. Tested with WB in Human.

Reconstitution

Add 0.2ml of distilled water will yield a concentration of 500ug/ml.

Anti-Cdc37 Antibody - Additional Information

Gene ID 11140

Other Names

Hsp90 co-chaperone Cdc37, Hsp90 chaperone protein kinase-targeting subunit, p50Cdc37, Hsp90 co-chaperone Cdc37, N-terminally processed, CDC37, CDC37A

Calculated MW

44468 MW KDa

Application Details

Western blot, 0.1-0.5 µg/ml, Human

Subcellular Localization

Cytoplasm .

Protein Name

Hsp90 co-chaperone Cdc37

Contents

Each vial contains 5mg BSA, 0.9mg NaCl, 0.2mg Na₂HPO₄, 0.05mg Thimerosal, 0.05mg NaN₃.

Immunogen

A synthetic peptide corresponding to a sequence at the C-terminus of human Cdc37(361-376aa DPLLEAVPKTGDEKDV), different from the related mouse sequence by two amino acids, and from the related rat sequence by three amino acids.

Purification

Immunogen affinity purified.

Cross Reactivity

No cross reactivity with other proteins

Storage

At -20°C for one year. After reconstitution, at 4°C for one month. It can also be aliquotted and stored frozen at -20°C for a longer time. Avoid repeated freezing and thawing.

Sequence Similarities

Belongs to the CDC37 family.

Anti-Cdc37 Antibody - Protein Information

Name CDC37

Synonyms CDC37A

Function

Co-chaperone that binds to numerous kinases and promotes their interaction with the Hsp90 complex, resulting in stabilization and promotion of their activity (PubMed:8666233). Inhibits HSP90AA1 ATPase activity (PubMed:23569206).

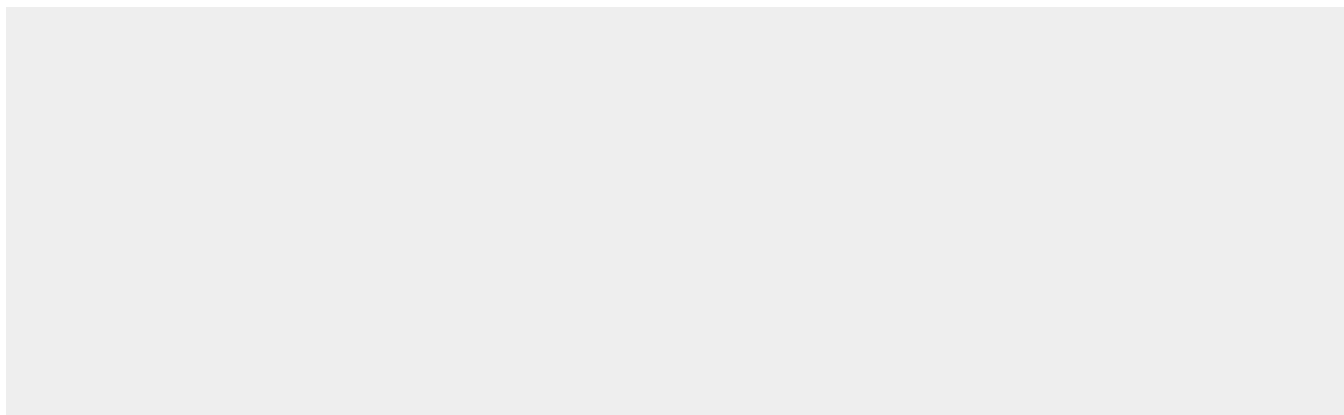
Cellular Location

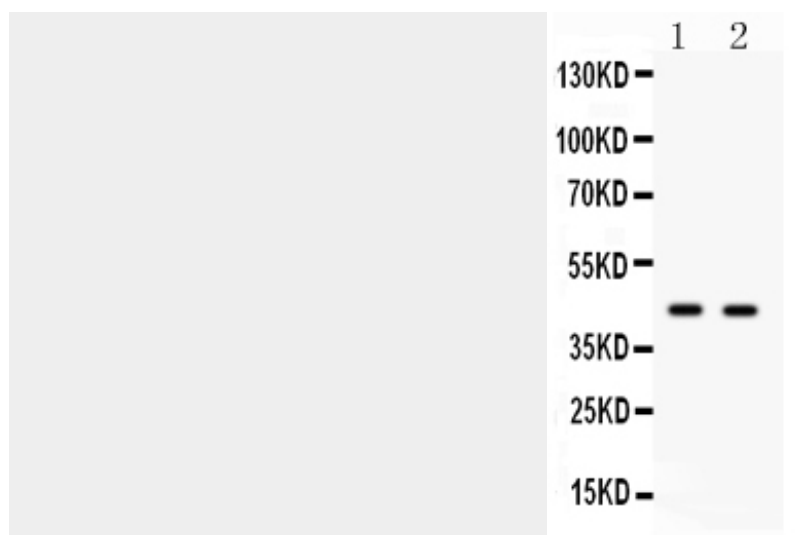
Cytoplasm.

Anti-Cdc37 Antibody - Protocols

Provided below are standard protocols that you may find useful for product applications.

- [Western Blot](#)
- [Blocking Peptides](#)
- [Dot Blot](#)
- [Immunohistochemistry](#)
- [Immunofluorescence](#)
- [Immunoprecipitation](#)
- [Flow Cytometry](#)
- [Cell Culture](#)

Anti-Cdc37 Antibody - Images



Anti- Cdc37 antibody, ABO11449, Western blotting All lanes: Anti Cdc37(ABO11449) at 0.5ug/ml
Lane 1: JURKAT Whole Cell Lysate at 40ug
Lane 2: 293T Whole Cell Lysate at 40ug
Predicted bind size: 44KD
Observed bind size: 44KD

Anti-Cdc37 Antibody - Background

Hsp90 co-chaperone Cdc37, also called P50CDC37 is a protein that in humans is encoded by the CDC37 gene. The protein encoded by this gene is highly similar to Cdc 37, a cell division cycle control protein of *Saccharomyces cerevisiae*. This gene is mapped to 19p13.2. This protein is a molecular chaperone with specific function in cell signal transduction. It has been shown to form complex with Hsp90 and a variety of protein kinases including CDK4, CDK6, SRC, RAF-1, MOK, as well as eIF2 alpha kinases. It is thought to play a critical role in directing Hsp90 to its target kinases.